

using ABS1 Airbrush System

The ABS 1 Set includes:



Air Grip



Air Hose



Air Adaptor



Air Can 80



Air Can Holder

1. Remove the cap from the Air Adaptor and screw the Air Adaptor into the base of the Air Grip.

2. Attach the Air Hose to the base of the Air Adaptor.

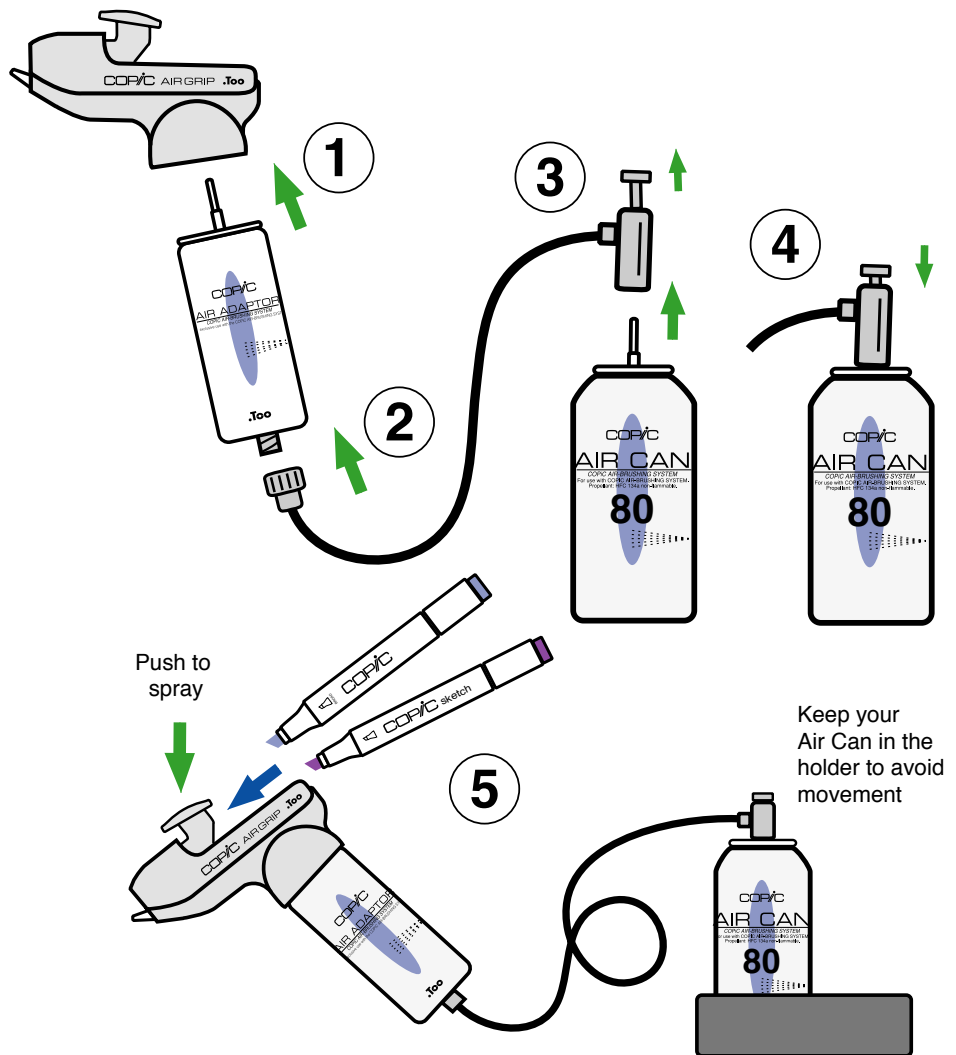
3. Unscrew the top valve most of the way out. Attach the Air Can nozzle to the hose.

4. Screw the valve back in to activate Air Can.

Note: When you are done using the Air Can, unscrew the top valve from the air hose before removing the Air Can.

5. Insert your favorite COPIC or COPIC Sketch pen into the Air Grip as shown, with the broad nib pointing up, then press the finger pad to spray.

You can replace the Air Can 80 with an Air



COPIC Airbrush System Warning



- Use in an area with good air circulation. If using in an area of poor ventilation, use a facemask.
- COPIC Markers are alcohol based, keep away from open flame.
- Do not spray on people or animals.
- Air Cans are under pressure- do not puncture.

For questions or comments contact us at Imagination International, Inc. COPIC Markers (541) 684-0013, or at www.copicmarker.com

Copyright © 2008 Imagination International, Inc. All Rights Reserved



COPIC
The marker created for creative people.